

less waste for a cleaner world

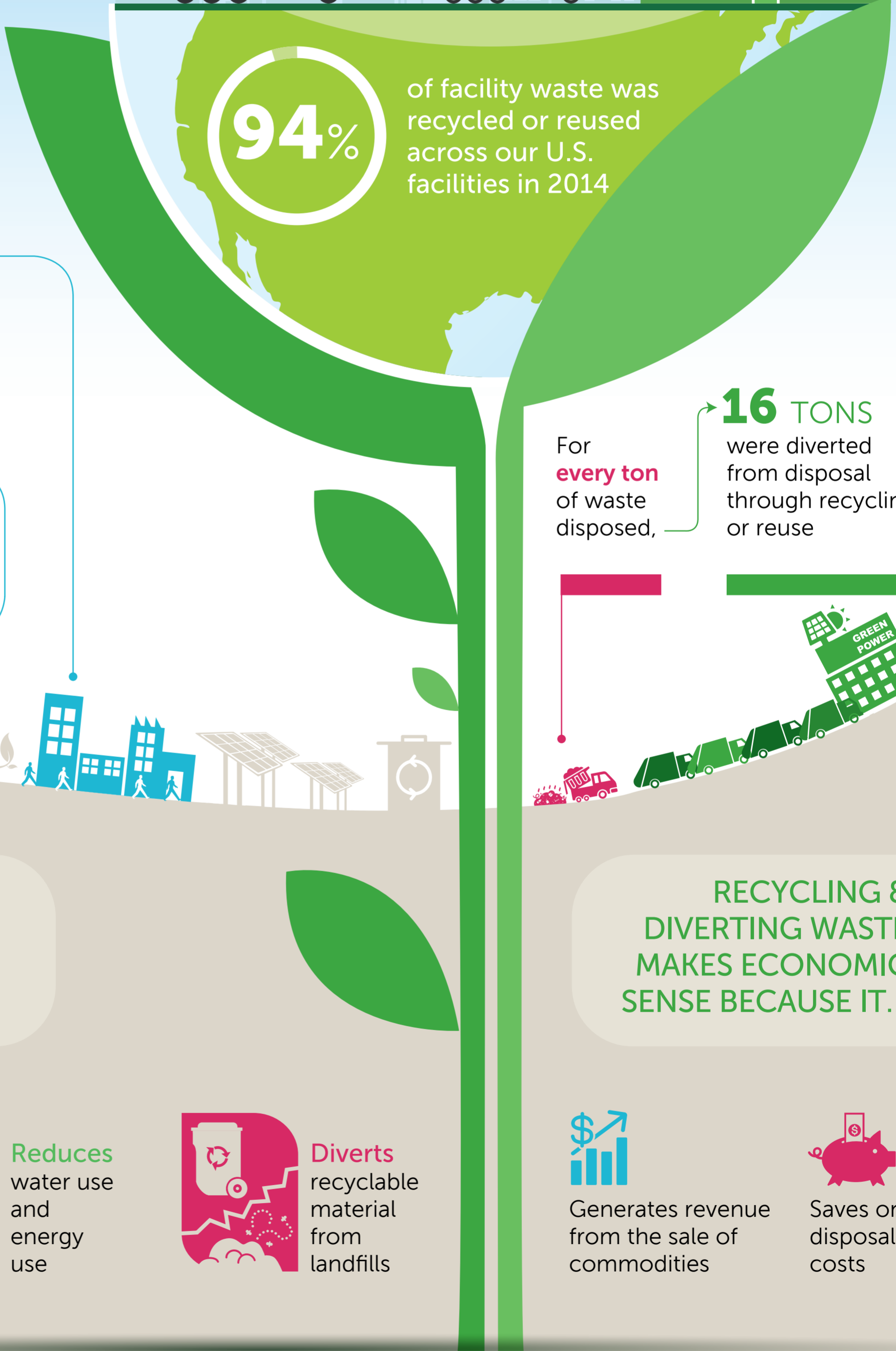
AMERICA RECYCLES DAY

Facilities recycled or reused **338,000** TONS of material in 2014

OUR FACILITIES

Companies employ roughly **200 workers per facility**

160 production facilities across the U.S., averaging **1.5 million square feet**



94% of facility waste was recycled or reused across our U.S. facilities in 2014

For **every ton** of waste disposed, **16 TONS** were diverted from disposal through recycling or reuse

RECYCLING & DIVERTING WASTE MAKES ENVIRONMENTAL SENSE BECAUSE IT...

Protects natural resources

Reduces water use and energy use

Diverts recyclable material from landfills

RECYCLING & DIVERTING WASTE MAKES ECONOMIC SENSE BECAUSE IT...

Generates revenue from the sale of commodities

Saves on disposal costs